

# RLG61 MINI SKID STEER ROTATING GRAPPLE



## Operator's Manual

**MechMaxx**

[www.mechmaxx.com](http://www.mechmaxx.com)



## TABLE OF CONTENTS

<b>TABLE OF CONTENTS</b>	<b>1</b>	<b>EQUIPMENT FEATURE WARNINGS</b>	<b>11</b>
<b>SPECIFICATIONS</b>	<b>2</b>	TREE PUSHER	11
<b>SAFETY SIGNS</b>	<b>3</b>	LOG DOGS	11
<b>IMPORTANT SAFETY INFORMATION</b>	<b>4</b>	RECEIVER HITCH	11
YOUR SAFETY	4	<b>MAINTENANCE</b>	12
GENERAL SAFETY	4	BEFORE EVERY USE	12
EQUIPMENT SAFETY GUIDELINES	4	EVERY WEEK	12
SAFETY TRAINING	5	AFTER EVERY SEASON	12
SAFETY SIGNS	5	HYDRAULIC SYSTEM	12
PREPARATION	5	BOLT TORQUE	12
MAINTENANCE SAFETY	6	ENGLISH TORQUE SPECIFICATIONS	12
HYDRAULIC SAFETY	6	METRIC TORQUE SPECIFICATIONS	13
TRANSPORT SAFETY	7	<b>SPECIFICATION</b>	13
TO THE NEW OPERATOR OR OWNER	7	<b>PARTS DIAGRAM</b>	14
<b>OPERATION</b>	<b>8</b>	<b>PARTS LIST</b>	15-16
MACHINE COMPONENTS	8		
HOOK-UP TORO MOUNT HITCH	8		
UNHOOK TORO MOUNT HITCH	8		
HYDRAULIC CONNECTIONS & MOUNTING	9		
MACHINE OPERATOR AWARENESS	9		
VOLT WIRE DIAGRAM FOR HYDRAULIC DIVERTER	10		

## SPECIFICATIONS

Model	RLG61
Lift Capacity	1500 lbs
Grapple Opening	59 in
Hydraulic Cylinder	2 in
Rotator Power Capacity	1.5 tons
Rotational Ability	360° One Direction Rotation
Flow Range Low	8 gal/min
Flow Range High	12 gal/min
Hydraulic Pressure	2900 psi
Maximum Static Axial Load	30 kN
Package Method	Iron Fram with film
Finish	Durable Powder Coated finish
Warranty	1 year
Packing Size	43x35x35 in
Weight (N.W./G.W.)	266/456 lbs

## SAFETY SIGNS

The rating plate on your machine may show symbols. These represent important information about the product or instructions on its use.



## IMPORTANT SAFETY INFORMATION

### YOUR SAFETY

YOU are responsible for the SAFE operation and maintenance of your MECHMAXX Mini Skid Steer Rotating Mini Grapple. YOU must ensure that you and anyone else who is going to use, maintain or work around the Mini Skid Steer Rotating Mini Grapple be familiar with the using and maintenance procedures and related SAFETY information contained in this manual. This manual will take you step-by-step through your working day and alerts you to all good safety practices that should be used while using the Mini Skid Steer Rotating Mini Grapple.

Remember, YOU are the key to safety. Good safety practices not only protect you but also the people around you. Make these practices a working part of your safety program. Be certain that EVERYONE using this equipment is familiar with the recommended using and maintenance procedures and follows all the safety precautions. Most accidents can be prevented. Do not risk injury or death by ignoring good safety practices.

1. Mini Skid Steer Rotating Mini Grapple owners must give operating instructions to operators or employees before allowing them to operate the machine, and at least annually thereafter.

2. The most important safety device on this equipment is a SAFE operator. It is the operator's responsibility to read and understand ALL Safety and Operating instructions in the manual and to follow these. Most accidents can be avoided.

3. A person who has not read and understood all using and safety instructions is not qualified to use the machine. An untrained operator exposes himself and bystanders to possible serious injury or death.

4. Do not modify the equipment in any way. Unauthorized modification may impair the function and/or safety and could affect the life of the equipment.

5. Think SAFETY! Work SAFELY!

### GENERAL SAFETY

1. Read and understand the Operator's Manual and all safety signs before using, maintaining, adjusting, or cleaning the Mini Skid Steer Rotating Mini Grapple.

2. Have a first-aid kit available for use should the need arise and know how to use it.

3. Have a fire extinguisher available for use should the need arise and know how to use it.

4. Do not allow riders.

5. Wear appropriate protective gear. This list includes but is not limited to:

- A hard hat
- Protective shoes with slip resistant soles
- Heavy gloves
- Heavy gloves
- Wet weather gear
- Hearing Protection

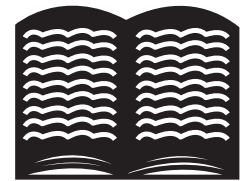
6. Install and secure all guards before starting.

7. Wear suitable ear protection for prolonged exposure to excessive noise.

8. Turn machine off, stop and disable engine, remove ignition key and place in your pocket, set park brake and wait for all moving parts to stop before servicing, adjusting, repairing, or unplugging.

9. Clear the area of people, especially small children, before using the unit.

10. Review safety related items annually with all personnel who will operating or maintaining the Mini Skid Steer Rotating Mini Grapple.



### EQUIPMENT SAFETY GUIDELINES

1. Safety of the operator and bystanders is one of the main concerns in designing and developing equipment. However, every year many accidents occur which could have been avoided by a few seconds of thought and a more careful approach to handling equipment. You, the operator, can avoid many accidents by observing the following precautions in this section. To avoid personal injury or death, study the following precautions and insist those working with you, or for you to follow them.

2. In order to provide a better view, certain photographs or illustrations in this manual may show an assembly with a safety shield removed. However, equipment should never be used in this condition. Keep all shields in place. If shield removal becomes necessary for repairs, replace the shield prior to use.

3. Replace any safety sign or instruction sign that is not readable or is missing. Location of such safety signs is indicated in this manual.

4. Never use alcoholic beverages or drugs which can hinder alertness or coordination while using this equipment. Consult your doctor about using this machine while taking prescription medications.

5. Under no circumstances should young children be allowed to work with this equipment. Do not allow persons to use or assemble this unit until they have read this manual and have developed a thorough understanding of the safety precautions and of how it works. Review the safety instructions with all users annually.

6. This equipment is dangerous to children and persons unfamiliar with its operation. The operator should be a responsible, properly trained and physically able person familiar with machinery and trained in this equipment's operations. If the elderly are assisting with work, their physical limitations need to be recognized and accommodated.

7. Never exceed the limits of a piece of machinery.

If its ability to do a job, or to do so safely, is in question - DON'T TRY IT.

8. Do not modify the equipment in any way. Unauthorized modification may result in serious injury or death and may impair the function and life of the equipment.

9. In addition to the design and configuration of this implement, including Safety Signs and Safety Equipment, hazard control and accident prevention are dependent upon the awareness, concern, prudence, and proper training of personnel involved in the operation, transport, maintenance, and storage of the machine. Refer also to Safety Messages and operation instruction in each of the appropriate sections of the Mini Skid Steer and machine manuals. Pay close attention to the Safety Signs affixed to the Mini Skid Steer and the machine.

## **SAFETY TRAINING**

1. Safety is a primary concern in the design and manufacture of our products. Unfortunately, our efforts to provide safe equipment can be wiped out by a single careless act of an operator or bystander.

2. In addition to the design and configuration of equipment, hazard control and accident prevention are dependent upon the awareness, concern, prudence, and proper training of personnel involved in the operation, transport, maintenance, and storage of this equipment.

3. It has been said, "The best safety feature is an informed, careful operator." We ask you to be that kind of an operator. It is the operator's responsibility to read and understand ALL Safety and Using instructions in the manual and to follow these. Accidents can be avoided.

4. the machine. If this machine is used by any person other than yourself, or is loaned or rented, it is the machine owner's responsibility to make certain that the operator, prior to using:

a. Reads and understands the operator's manuals.

b. Is instructed in safe and proper use.

5. Know your controls and how to stop the Mini Skid Steer and machine quickly in an emergency. Read this manual and the one provided with Mini Skid Steer.

6. Train all new personnel and review instructions frequently with existing workers. Be certain only a properly trained and physically able person will use the machinery. A person who has not read and understood all using and safety instructions is not qualified to use the machine. An untrained operator exposes himself and bystanders to possible serious injury or death. If the elderly is assisting with the work, their physical limitations need to be recognized and accommodated.

## **SAFETY SIGNS**

1. Always keep safety signs clean and legible.

2. Replace safety signs that are missing or have become illegible.

3. Replaced parts that displayed a safety sign should also display the current sign.

4. Safety signs have a part number in the lower righthand corner. Use this part number when ordering replacement parts.

5. Safety signs are available from your authorized Distributor or Dealer Parts Department or the factory.

## **PREPARATION**

1. Never use the machine until you have read and completely understand this manual, the Mini Skid Steer Operator's Manual and each of the Safety Messages found on the safety signs on the Mini Skid Steer and machine.

2. Personal protection equipment including hard hat, safety glasses, safety shoes, and gloves are recommended during assembly, installation, operation, adjustment, maintaining, repairing, removal, cleaning, or moving the unit. Do not allow long hair, loose fitting clothing or jewelry to be around equipment.

### 3. PROLONGED EXPOSURE TO LOUD NOISE MAY CAUSE PERMANENT HEARING LOSS!

Power equipment with or without equipment attached can often be noisy enough to cause permanent, partial hearing loss. We recommend that you wear hearing protection on a full-time basis if the noise in the Operator's position exceeds 80db. Noise over 85db on a long-term basis can cause severe hearing loss. Noise over 90db adjacent to the Operator over a long-term basis may cause permanent, total hearing loss. NOTE: Hearing loss from loud noise (from Mini Skid Steer, chain saws, radios, and other such sources close to the ear) is cumulative over a lifetime without hope of natural recovery.

4. Clear working area of stones, branches or hidden obstacles that might be hooked or snagged, causing injury or damage.

5. Use only in daylight or good artificial light.

6. Be sure machine is properly mounted, adjusted and in good operating condition.

7. Ensure that all safety shielding, and safety signs are properly installed and in good condition.

## MAINTENANCE SAFETY

1. Good maintenance is your responsibility. Poor maintenance is an invitation to trouble.

2. Follow good shop practices.

- Keep service area clean and dry.

- Be sure electrical outlets and tools are properly grounded.

- Use adequate light for the job at hand.

3. Make sure there is plenty of ventilation. Never operate the engine of the towing vehicle in a closed building. The exhaust fumes may cause asphyxiation.

4. Before working on this machine, shut off the engine, set the brake, and turn fuel valve off.

5. Never work under equipment unless it is blocked securely.

6. Always use personal protection devices such as eye, hand and hearing protectors, when performing any service or maintenance work. Use heavy or leather gloves when handling blades.

7. Where replacement parts are necessary for periodic maintenance and servicing, genuine factory replacement parts must be used to restore your equipment to original specifications. The manufacturer will not be responsible for injuries or damages caused by use of unapproved parts and/or accessories.

8. A fire extinguisher and first aid kit should be kept readily accessible while performing maintenance on this equipment.

9. Periodically tighten all bolts, nuts and screws and check that all electrical and fuel connections are properly secured to ensure unit is in a safe condition.

10. When completing a maintenance or service function, make sure all safety shields and devices are installed before placing unit in service.

## HYDRAULIC SAFETY

1. Make sure that all the components in the hydraulic system are kept in good condition and are clean.

2. Before applying pressure to the system, make sure all components are tight, and that lines, hoses and couplings are not damaged.

3. Do not attempt any makeshift repairs to the hydraulic lines, fittings, or hoses by using tapes, clamps or cements. The hydraulic system operates under extremely high pressure. Such repairs will fail suddenly and create a hazardous and unsafe condition.

4. Wear proper hand and eye protection when searching for a high-pressure hydraulic leak. Use a piece of wood or cardboard as a backstop instead of hands to isolate and identify a leak.

5. If injured by a concentrated high-pressure stream of hydraulic fluid, seek medical attention immediately. Serious infection or toxic reaction can develop from hydraulic fluid piercing the skin surface.

6. Relieve pressure on hydraulic system before maintaining or working on system.



## TRANSPORT SAFETY

1. Comply with state and local laws governing safety and transporting of machinery on public roads.
2. Check that all the lights, reflectors and other lighting requirements are installed and in good working condition.
3. Do not exceed a safe travel speed. Slow down for rough terrain and cornering.
4. Do not drink and drive.
5. Be a safe and courteous driver. Always yield to oncoming traffic in all situations, including narrow bridges, intersections, etc. Watch for traffic when operating near or crossing roadways.

## TO THE NEW OPERATOR OR OWNER

Follow all safety instructions exactly. Safety is everyone's business. By following recommended procedures, a safe working environment is provided for the operator, bystanders, and the area around the worksite. Untrained operators are not qualified to operate the machine.

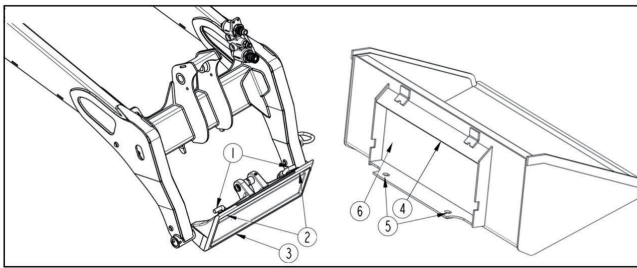
Many features incorporated into this machine are the result of suggestions made by customers like you. Read this manual carefully to learn how to use the chipper safely and how to set it to provide maximum field efficiency. By following the using instructions in conjunction with a good maintenance program, your Mini Skid Steer Rotating Mini Grapple will provide many years of trouble-free service.

## OPERATION

### MACHINE COMPONENTS

When attaching the Rotating Mini Grapple to a Mini Skid Steer, follow this procedure:

1. Make sure that all bystanders, especially small children are clear of the work area.
2. Make sure there is enough room and clearance to safely drive up to the Rotating Mini Grapple.
3. Drive up to The Rotating Mini Grapple while aligning the mounting components, and hook up into the mount.



### HOOK-UP TORO MOUNT HITCH

The Mini Steer Skid Bucket utilizes a Toro mount receiver plate for easy connection and disconnection.

1. Check loader and bucket hitch plates before hooking-up the bucket. Make sure all components are in good working condition before putting them into service:

Check for and remove any debris in the loader and bucket hitch plates.

Check for structural cracks in the hitch plates. Repair or replace hitch plates as needed.

Check hitch components frequently. Repair or replace any part that is excessively worn, bent, broken, or missing.

Lubricate lock pins (#1) at the prescribed interval in your compact loader manual.

Check operation of lock pins (#1). Lock pins must move freely and extend fully into the hitch plate bottom slots (#5).

2. Raise lock pins (#1) by rotating the handles 180° until they point out as shown.
3. Use anti-slip steps/surfaces and grab handles on the compact loader when stepping on and off the unit.
4. Start compact loader.

5. Drive slowly to the bucket while making sure the loader's hitch plate top (#2) is parallel with the bucket's top angle bar (#4).

6. Tilt top of loader hitch plate (#2) slightly forward.

7. Place top of loader's hitch plate (#2) under the bucket's top angled bar (#4) and slowly raise loader hitch plate (#3) up until the loader hitch plate is seated under the top angle bar.

8. Tilt top of loader hitch plate (#2) back until the bucket hitch plate (#6) makes full contact with the face of loader hitch plate (#3) and the bucket's hitch plate (#6) is slightly off the ground.

9. Shut compact loader down before dismounting.

10. Lower lock pins (#1) by rotating the handles 180° until they point in. If needed tap on lock pins to drive them down and through bottom slots (#5).

11. Check hitch hook-up to verify it is locked properly.

a. Make sure top of loader hitch plate (#2) is fully seated under the bucket's top angle bar (#4).

b. Make sure bottom of loader hitch plate (#3) is seated against bucket's hitch plate (#6)

c. Make sure lock pins (#1) are fully inserted through bottom slots (#5) and are fully down.

### UNHOOK TORO MOUNT HITCH

1. Park on a flat, level, solid surface.

2. Lower bucket until it is slightly above the surface and angled so that the front of the bucket is slightly higher than the back.

3. Without changing the height of the loader arms and attachment, shut compact loader down. Unhook bucket as follows:

a. Rotate the hitch latch pins (#1) to the unlocked position by turning them so that the handles are pointing outward. Make sure the hitch latch pins are pulled up all the way to ensure a proper disconnect.

b. Return to compact loader and tilt top of hitch plate (#3) slightly forward toward the bucket.

c. Slowly lower bucket until its top angle bar (#4) and loader hitch (#3) have separated.

d. Back compact loader slowly away from the bucket while making sure the Toro mount hitch does not interfere with the bucket.

## HYDRAULIC CONNECTIONS & MOUNTING

Engage the lock pins to secure The Rotating Mini Grapple to the loader.

Connect the hydraulics:

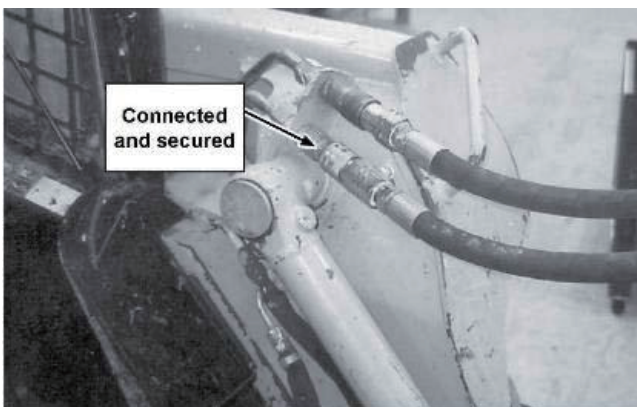
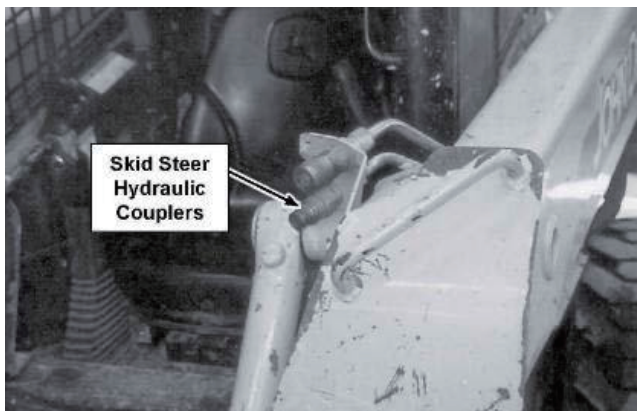
Use a clean rag or paper towel to clean the dirt from the couplers on the hose ends of the Mini Skid Steer.

Connect the hoses to the Mini Skid Steer couplers. Be sure the couplers are securely seated.

Route and secure the hoses along the frame with clips, tape or plastic ties to prevent binding and pinching. Be sure to provide slack for tilting.

Raise The Rotating Mini Grapple.

Check that all hydraulic connections and locks are secure before beginning work.



Reverse the above procedure when unhooking.

Place planks or boards under the frame for extra support if required.

## MACHINE OPERATOR AWARENESS

Do not operate this machine until you have read the manual page by page and understand the manual. The owner of this machine is responsible for all operators and support personnel in the operation and safety precautions of this equipment. Proper training prior to operation of the equipment is obligatory.

- Study the manual and read all safety instructions carefully, including all instruction stickers on the machine.
- Before anyone uses the attachment, make sure that he/she also studies these instructions for use and all safety regulations
- The operator must be of age (not a minor) and in good health.
- The operator cannot be under the influence of alcohol, drugs or medicines.
- Stay alert! Do not operate the attachment when fatigued.
- In order not to endanger the safety of the operator, do not modify the attachment.
- Use only original parts replacements. Remove all inappropriate components that don't belong to the attachment.
- Install all protective shields in their proper place.
- Study the function of all controls.
- Place the attachment on the ground in such a position that it cannot move during maintenance, transporting, cleaning, adjustments, and installation of accessories or storage.
- Do not put the attachment into such uses, for which it is not designed.
- The danger zone is 100 feet; ensure that no one is inside the danger zone, take special note of children, cease all operation if children are present in the danger zone.
- Familiarize yourself with the controls and how to stop the machine in an emergency.
- Never leave the attachment hanging in the air.
- Wear protective gloves and other protective clothing to prevent exposures.
- In case you install a new additional valve system, you have to take into consideration that pressurized hydraulic hoses cannot be in the cabin area without protection.

- The valve controls must be installed in the cabin of the equipment.
- The attachment is designed for short distance transfer of timber on a landing.
- The attachments are not to carry a load while being transported or while on public roadways.
- Failure to heed the warnings printed on the grapple or in the operator's manual may result in serious injury or death!
- Do not wear loose or torn clothes. Keep hands, feet and clothing away from power driven parts.
- Never ground the attachment or the load. Always operate the attachment from inside the cab of the machine or the operators' controls, staying a safe distance (more than an arms reach away) from moving parts.
- Check the tightness of all nuts and bolts after the first service hour. Also check the tightness at least once a month. They should be fastened in place, and in good working condition.
- Before lubricating the machine, shutdown the engine and stop the machine.
- Observe possible leakage of hydraulic oil during the use of the machine. Repair leaks immediately to prevent contamination of nature.
- Pressurized oil can be hazardous. Pressurized oil jet can penetrate skin and cause serious injuries or death.
- Some photographs in this manual may show guards and shields removed for the purposes of illustration only. Be sure that all guards and shields are in the proper operating positions before operating the equipment.
- Check that attachments are securely fastened to the attachment hitch prior to working (pins to be fully engaged).
- Do not use the equipment to lift or transport people.
- Never rely on the hydraulics to be impervious to failure, use commonsense and do not lift attachments over valuable items, areas or potential hazards (including but not limited to: people, animals, waterways, roadways, vehicles, utilities).

## VOLT WIRE DIAGRAM FOR HYDRAULIC DIVERTER

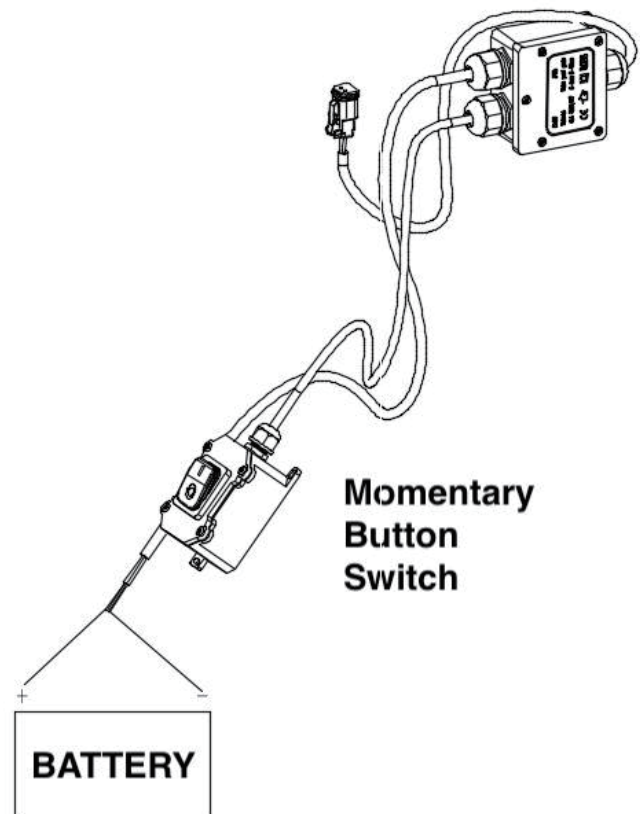
To operate the diverter some loaders require this switch and circuit to be installed when only one auxiliary circuit is available.

This circuit will operate a hydraulic diverter valve. In the de-energized state the auxiliary hydraulic circuit will control the opening and closing of the grapple.

In the energized state the diverter will control the rotation of the grapple.

You need to press and hold the provided momentary switch and operate the auxiliary hydraulic valve for the rotator to spin. Therefore, glue the switch to the joystick or most comfortable position while operating the machine's auxiliary valve control. Run the wire from the battery to the momentary button and secure it down the boom.

Splice the 2-wire connector on (note polarity) and secure near Hydraulic couplers.

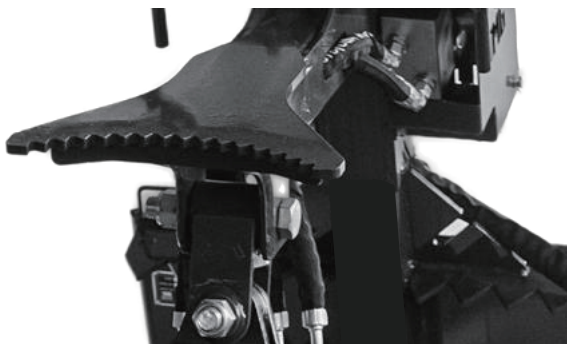


## EQUIPMENT FEATURE WARNINGS

Unique Branch Manager Features

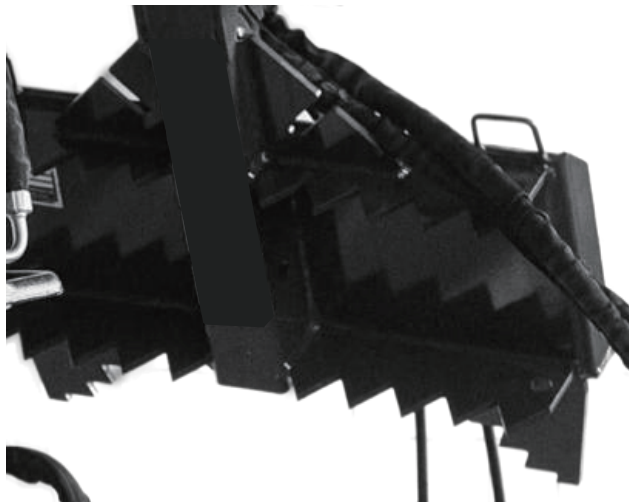
ROPE BOLLARD

Rated for 200 lbs. Never exceed your equipment operating capacity



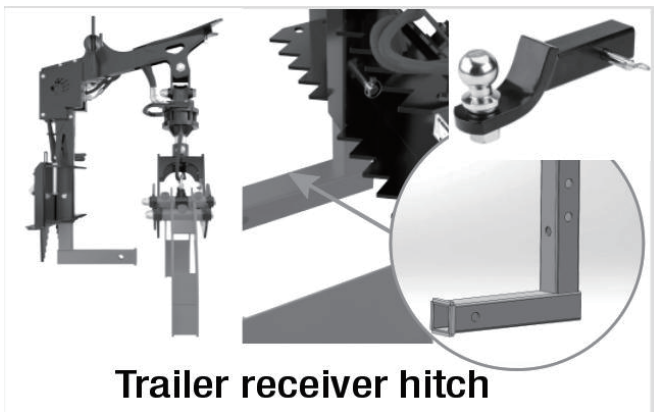
### TREE PUSHER

Never exceed your machine's operating Capacity



### LOG DOGS

Never exceed your machine's operating Capacity



### RECEIVER HITCH

Never exceed your machine's operating Capacity

Round stock inserts into the bottom of Grapple Hanger—Pin it In. Hook trailer safety chain to safety lock slot. DO NOT USE ON INCLINES OR HILLS

## MAINTENANCE

### BEFORE EVERY USE

Check that all fasteners (nuts, bolts, pins, keepers) are in their right place and are tight. Inspect and replace any worn, torn or missing safety decals. Investigate the location of any oil leaks and repair.

Lubricate all joints with lithium grease.

### EVERY WEEK

Check the condition of the cutting edge and/or tooth points. Order parts if the cutting edge or points are becoming worn and replace as soon as possible.

### AFTER EVERY SEASON

Inspect the implement for any loose or worn parts that may need to be replaced prior to the next season.

Visually inspect the cutting edge. Replace, if necessary.

Clean, sand & repaint any area that looks worn or scratched to prevent further rusting. Use an equipment-paint found at your local hardware store or building center.

Replace any warning decals that have been lost or damaged.

Store your implement in a shed or cover with a water-proof tarp to protect it from the weather. Store in an area not frequented by children.

### HYDRAULIC SYSTEM



**A small stream of oil from a pinhole leak could penetrate your skin if contacted. To avoid an accident that could result in Death or Serious Injury, never use your hand or other body parts in an attempt to locate a hydraulic leak.**



**Always release the hydraulic system pressure from the hydraulic circuits prior to removing the attachment or any hydraulic system service work.**

### BOLT TORQUE

#### CHECKING BOLT TORQUE

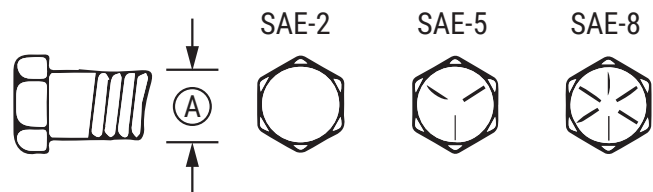
The tables shown below give correct torque values for various bolts and cap screws. Tighten all bolts to the torques specified in chart unless otherwise noted. Check tightness of bolts periodically, using bolt torque chart as a guide. Replace hardware with the same strength bolt.

Torque figures indicated above are valid for non-greased or non-oiled threads and heads unless otherwise specified. Therefore, do not grease or oil bolts or cap screws unless otherwise specified in this manual. When using locking elements, increase torque values by 5%.

\* Torque value for bolts and cap screws are identified by their head markings

### ENGLISH TORQUE SPECIFICATIONS

Bolt Diameter	Bolt Torque					
	SAE 2		SAE 5		SAE 8	
	N.m	lb-ft	N.m	lb-ft	N.m	lb-ft
1/4"	8	6	12	9	17	12
5/16"	13	10	25	19	36	27
3/8"	27	20	45	33	63	45
7/16"	41	30	72	53	100	75
1/2"	61	45	110	80	155	115
9/16"	95	60	155	115	200	165
5/8"	128	95	215	160	305	220
3/4"	225	165	390	290	540	400
7/8"	230	170	570	420	880	650
1"	345	225	850	630	1320	970



**METRIC TORQUE SPECIFICATIONS**

Bolt Diameter	Bolt Torque			
	8.8		10.9	
	N.m	lb-ft	N.m	lb-ft
M3	0.5	0.4	1.8	1.3
M4	3	2.2	4.5	3.3
M5	6	4	9	7
M6	10	7	15	11
M8	25	18	35	26
M10	50	37	70	52
M12	90	66	125	92
M14	140	103	200	148
M16	225	166	310	229
M20	435	321	610	450
M24	750	553	1050	744
M30	1495	1103	2100	1550
M36	2600	1917	3675	2710



**SPECIFICATION**

**SPECIFICATIONS & CAPACITIES**

- Universal Mini Skid Steer mount
- Lift Capacity : 3000lbs
- Hose Routing : Internal
- Hydraulic Cylinder: 2"
- Rotator : 3 Ton
- Hydraulic Flow 8-12GPM
- Hydraulic Pressure:2900 PSI
- Rotation 360
- Max static axial load:30Kn
- Open max size: 59"
- Net Weight:172kg



## PARTS LIST

No.	DESCRIPTION	QTY
1	TORO Hanger Mount	1
2	Bolt M8*25	6
3	Washer 8	12
4	Washer 8	12
5	Nut M8	4
6	Bolt M8*20	4
7	Protective plate weldment 03	1
8	Bolt M4*10	2
9	Washer 4	2
10	Washer 4	2
11	Up Hanging pin	2
12	Lock pin 8	2
13	Electrical components	1
13-1	Electrical box	1
13-2	Switch box	1
13-3	Wire 1	1
13-4	Wire 2	1
13-5	Wire 3	1
13-6	2 pins connector (female)	1
13-7	Pin (female)	2
13-8	2 pin locking plate	1
14	Protective plate weldment	1
15	Bolt M24*140	2
16	Nut M24	2
17	Motor connection welding parts	1
18	Bolt M8*30	2
19	Valve block connection plate	1
20	Washer 10	2
21	Washer 10	2
22	Bolt M10*30	2

No.	DESCRIPTION	QTY
23	Protective plate 2 weldment	1
24	Hydraulic system	1
24-1	Motor	1
24-2	Oil cylinder components	1
24-3	Cylinder Hose L590	2
24-4	Motor Hose 01 L700	2
24-5	Motor Hose 02. L540	2
24-6	Oil inlet and outlet Hose L1800	2
24-7	Two position six way one-way control valve group	1
24-8	Hard tube hose	2
24-9	Flat Faced Couplers G1/2 Male	1
24-10	Flat Faced Couplers G1/2 Female	1
24-11	End Straight Joint M16*1.5-M16*1.5	2
24-12	End Straight Joint NPT1/2-M18*1.5	2
24-13	High voltage articulated joint G3/8-M18 * 1.5	4
24-14	Flat quick change male 1/2 rubber sleeve	1
24-15	Flat quick change female 1/2 rubber sleeve	1
24-16	45 degree combination joint G3/8-M16 * 1.5	2
25	Lower clamping ligand	1
25-1	Claw 1 weldment	1
25-2	Claw 2 weldment	1
25-3	Claw connection bracket welded parts	1
25-4	Connecting plate for oil cylinder 01	1
25-5	LOGO back panel	1
25-6	Oil cylinder sales	2
25-7	Claw connection pin	2
25-8	Oil cup M8 * 1-304	6
25-9	Washer 6	4
25-10	Nut M20	4
25-11	Bolt M24*100	1

No.	DESCRIPTION	QTY
25-12	Nut M24	1
25-13	Washer 6	4
25-14	Nut M6	4
25-15	Connecting plate for oil cylinder 02	1
26	Trailer connection welding parts	1



***MechMaxx***

[info@mechmaxx.com](mailto:info@mechmaxx.com)