

# R60 RAMMER

POWERED BY HONDA



[ R60 ]



BUILDING A BETTER JOBSITE EXPERIENCE

MBW.COM



# GROUND POUNDER® DIVISION

**BUILT TO HIT HARD. BUILT TO STAY WORKING.**



MBW builds rammers with one goal in mind: solve the problems that keep them in the shop. Our patented percussion system uses UHMW polyethylene slide bearings instead of traditional metal-on-metal wear surfaces to reduce friction, heat and internal wear. That means less load on the engine, longer component life and lower maintenance. The new R60 carries that same MBW approach forward with improved control, reduced hand-arm vibration, easier service and a bold new look.

## **MBW RAMMER FEATURES**

- Patented UHMW polyethylene slide bearings help reduce friction, heat and wear
- Lower internal drag helps reduce engine load and extend component life
- Steel-reinforced vulcanized rubber bellows stand up to tough jobsite conditions
- Reduced hand-arm vibration without sacrificing compaction performance
- Built for easier service and long-term durability

## **5 YEAR WARRANTY ON BELLOWS & PERCUSSION SYSTEM BEARINGS**

MBW rammers are built for lower maintenance and longer life, using patented non-metallic slide bearings to reduce friction, heat and wear. Reinforced rubber bellows resist punctures and UV damage, and the system is designed to help prevent major internal damage if lubricant is lost. MBW gas-powered rammers are backed by a 5-year warranty on percussion system slide bearings and bellows.

## **RAMMER SPECIFICATIONS**

- Published lift capacity reflects ideal conditions (clean sand, optimum moisture). Good compaction practice restricts lift depth to a maximum of 12 inches for granular soils, 6 to 9 inches for cohesive soils.
- Published travel speeds generally indicate operation under ideal conditions.
- Area of compaction calculations factor in lift and travel expectations that may not be realistic for all conditions of compaction.
- There is no universally accepted formula or method for determining rammer “compaction force”. Manufacturers employ their own formulas/methods to develop “compaction force” specifications thereby rendering comparison between rammers an exercise in futility.

# GROUND POUNDER® DIVISION

## NEW R60 RAMMER



The new R60 rammer was designed with three key things in mind - **More control. Less fatigue. Easy service.**

It weighs in at 144 lbs with Honda GX120R power and a class-leading fuel tank for longer run time. Patented UHMW slide bearings reduce friction and heat and are replaceable for simple repairs. Heavy-duty reinforced bellows and an 11-inch ductile cast iron shoe transfer force directly to the soil.

The R60 has been **perfectly balanced to greatly improve control and stability** while taking less of a toll on the operator.

An optional tachometer/hour meter ensures that the rammer is operating at maximum capacity. It also informs service personnel of proper maintenance intervals.

MODEL	R60
Shoe Size	11 x 13 in (28 x 33 cm)
Engine Options & Operating Weight	Honda GX120R 144 lb (65 kg)
Percussion Rate	Up to 720 blows/min
Compaction Force	3200 lbf (14.2 kN)
Compaction Area	3025 ft <sup>2</sup> /hr (281 m <sup>2</sup> /hr)
Travel Speed	Up to 55 ft/min (16 m/min)
Fuel Capacity	1.1 gal (4.2 L)
Operating Noise Level	93 dBA
Compaction Depth*	Up to 18 in (45 cm)

\* Clean sand, optimum moisture. MBW recommends that lifts not exceed 12" of granular soil, 9" of cohesive soil. Fuel capacity of 1.1 gal (4.2 L); Engine 3500 rpm ( ) Metric Measurements

### POLYETHYLENE

fuel tank resists punctures and abrasions, is UV resistant and has largest capacity in the industry

### HARDENED STEEL SPRING SEPARATOR & UHMW SLIDE BEARING

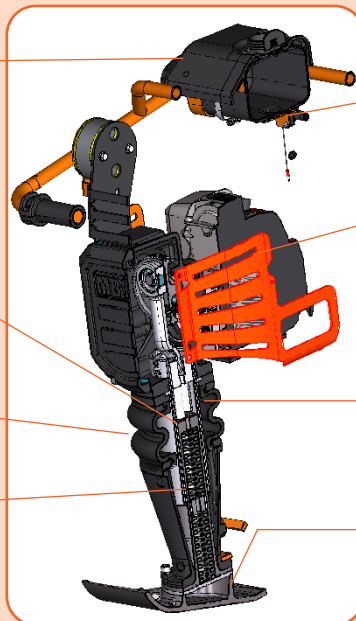
to further reduce wear and friction

### 4 PLY VULCANIZED RUBBER BELLOWS

reinforced with stranded steel cable

### COMPRESSION SPRINGS

manufactured of highest quality, stress relieved alloy steel. Springs do not bottom out or require rubber stoppers like competitive models



### COMBINED FUEL/ENGINE SHUT OFF SWITCH

helps prevent engine flooding and oil contamination during transport

### PRECISION BALANCED DESIGN

with engine & gearbox placement optimized for effortless handling & lower hand-arm vibration

### HIGH DENSITY NON-METALLIC SLIDE BEARINGS

reduce internal friction to the lowest levels in the industry

### DUCTILE CAST IRON

MBW shoes do not absorb impact like competitive models but transfer all force to soil

## ABOUT MBW INC.

Since 1967, MBW has been at the forefront of manufacturing innovative compaction, concrete, and related equipment for the construction industry.

### WHAT SETS MBW APART?

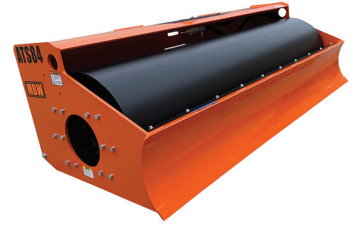
MBW doesn't simply follow the crowd; we innovate. Each new engineering project begins with the belief that there is always room for improvement—whether in productivity, maintenance, longevity, user safety, or cost-effectiveness. Our research and development often lead to groundbreaking solutions that set new standards in the industry. MBW products enhance productivity, provide the safest tools in their class, address long-standing maintenance issues, and extend product lifespans. **Our mission is to offer equipment users significant, tangible value—clear reasons to choose MBW products.**



SCREEDS



TROWELS



ROLLER ATTACHMENTS



MIXERS



VIBRATORY PLATES



*MBW Inc.*  
250 Hartford Road • P.O. Box 440  
Slinger, Wisconsin • 53086-0440 • USA  
Ph: 800-678-5237 or 262-644-5234 • Fax: 262-644-5169  
E-mail: [mbw@mbw.com](mailto:mbw@mbw.com) • Website: [www.mbw.com](http://www.mbw.com)

*MBW Europe Ltd.*  
Units 2 & 3 Cochrane Street • Bolton BL3 6BN • England UK  
Ph: 44 (0) 1204 387784 • Fax: 44 (0) 1204 387797  
E-mail: [mbwuk@mbw.com](mailto:mbwuk@mbw.com) or [mbweurope@mbw.com](mailto:mbweurope@mbw.com)  
Europe Website: [www.mbweurope.com](http://www.mbweurope.com)



## AUTHORIZED DISTRIBUTOR

L0424 04/26  
Copyright ©  
MBW Incorporated  
All Rights Reserved